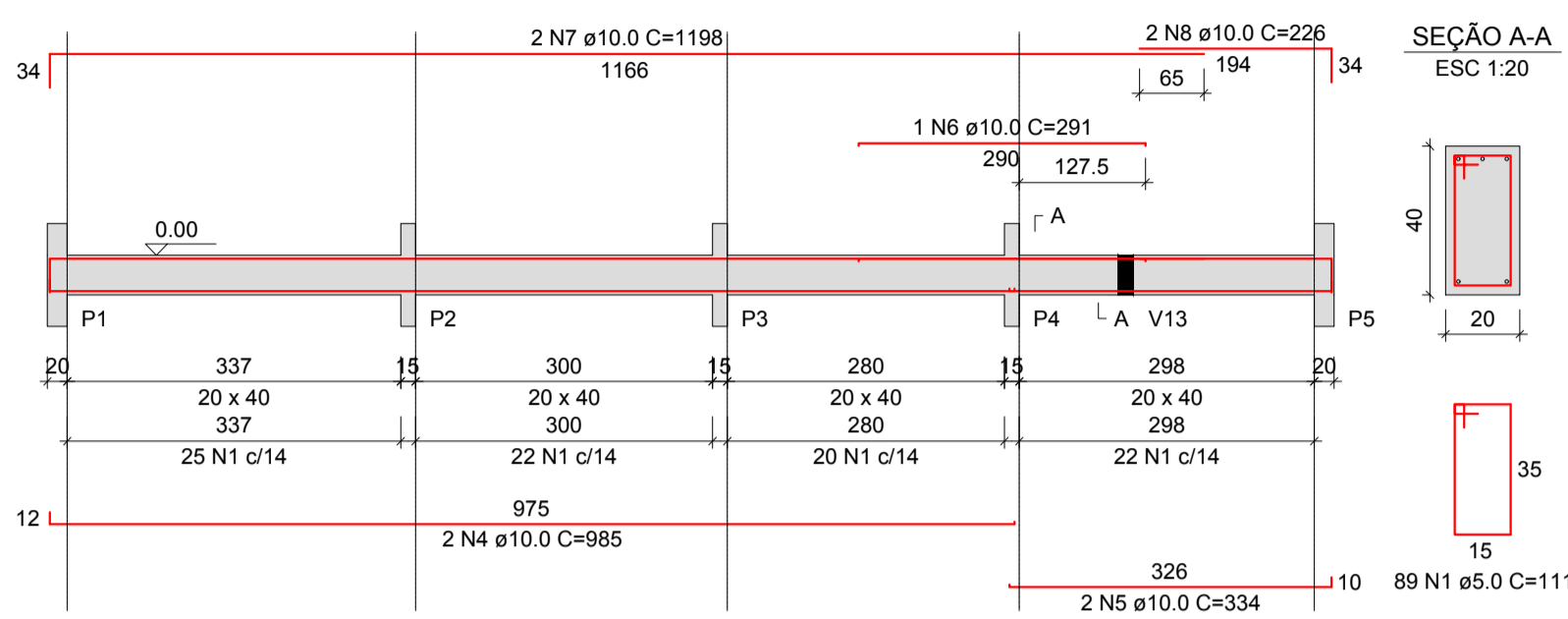
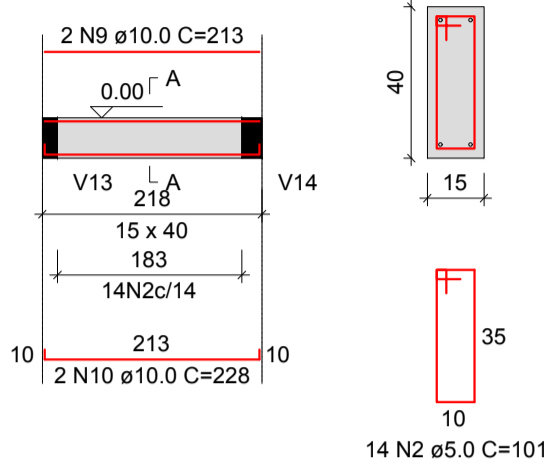


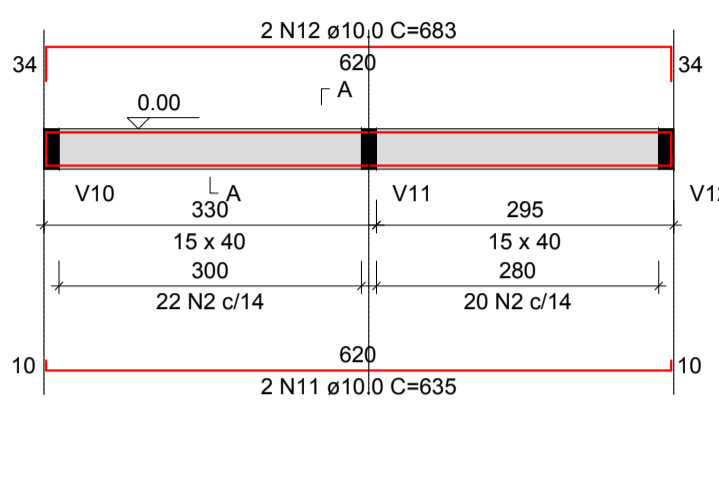
V1 (20 x 40)
ESC 1:75



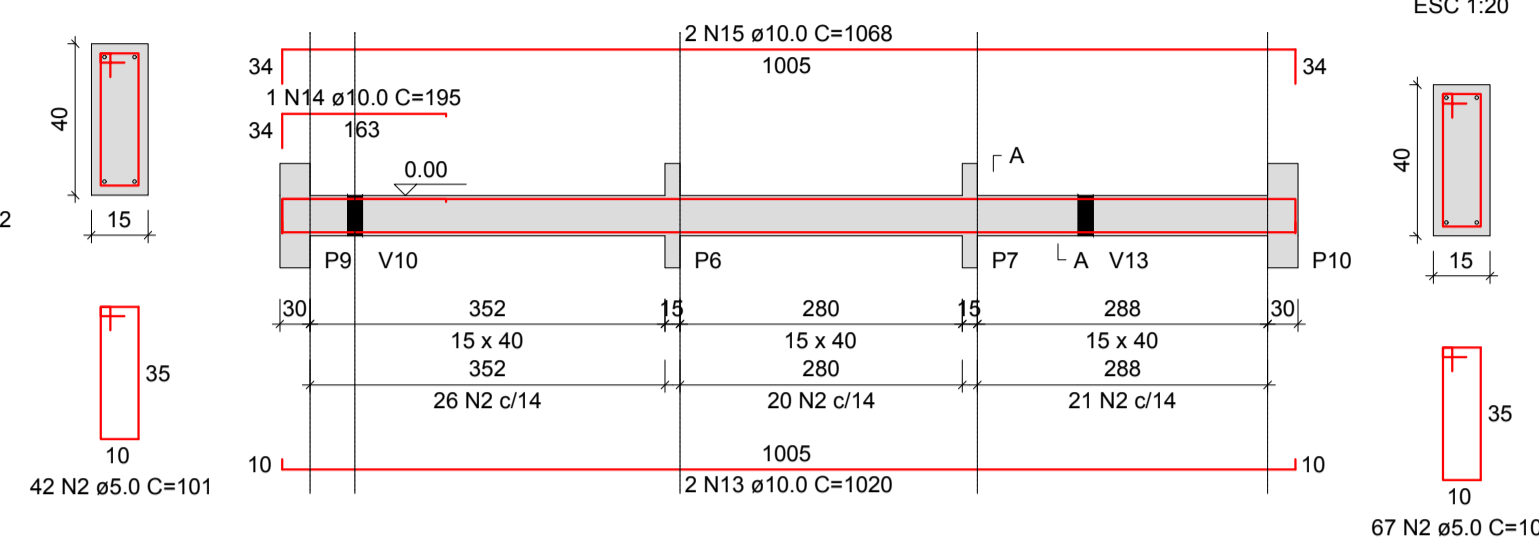
V2 (15 x 40)
ESC 1:75



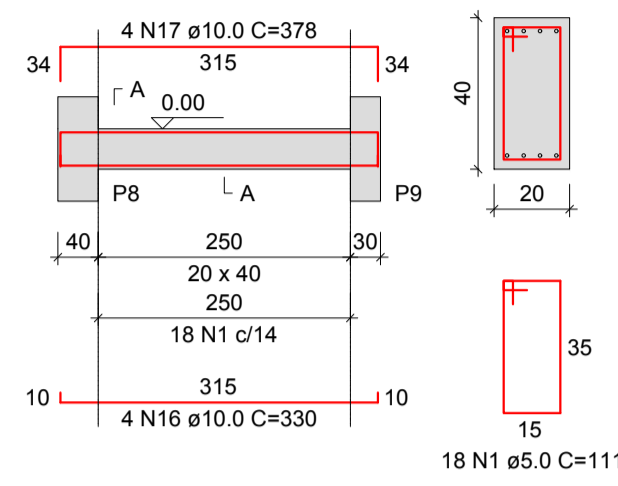
V3 (15 x 40)
ESC 1:75



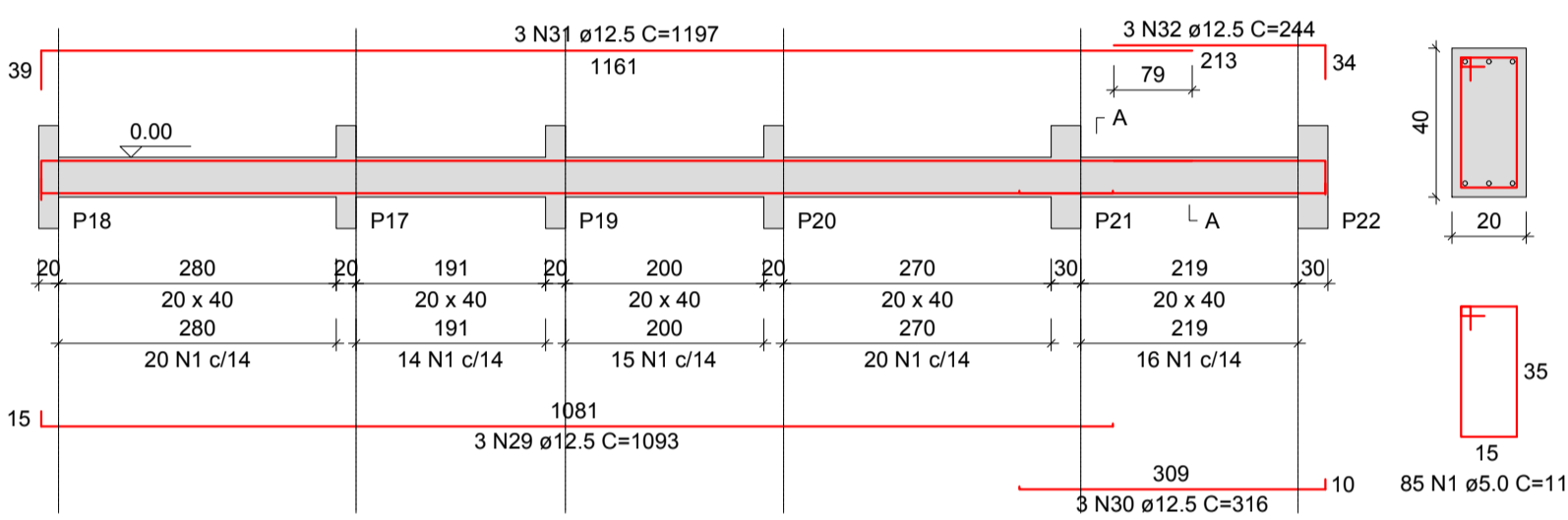
V4 (15 x 40)
ESC 1:75



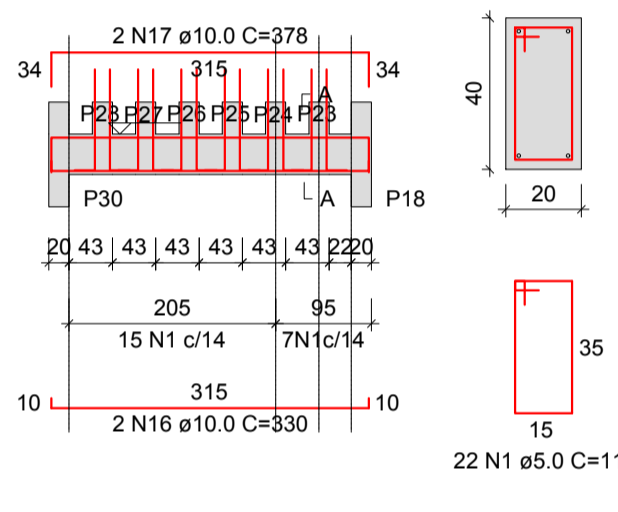
V5 (20 x 40)
ESC 1:75



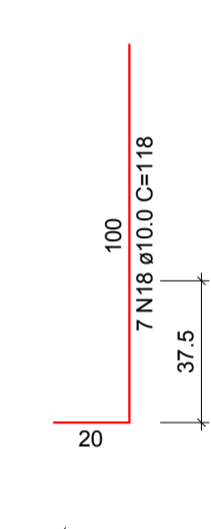
V6 (20 x 40)
ESC 1:75



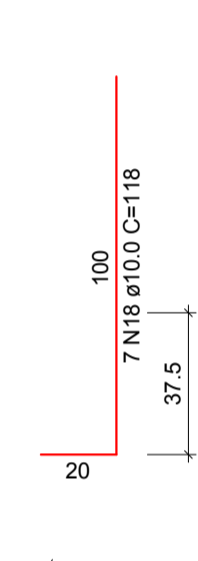
V7 (20 x 40)
ESC 1:75



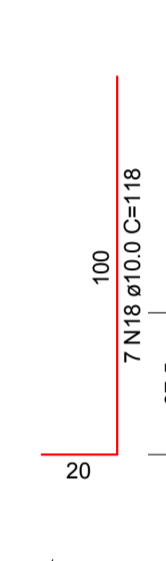
SEÇÃO A-A
ESC 1:20



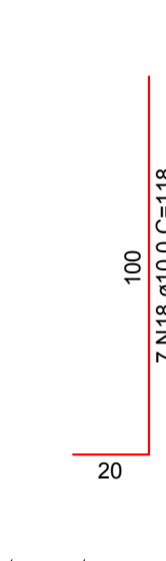
ESPERA P28
ESC 1:20



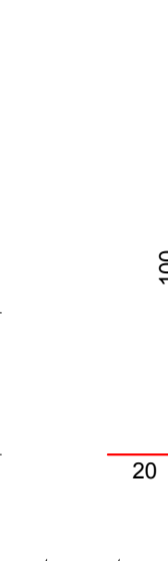
ESPERA P27
ESC 1:20



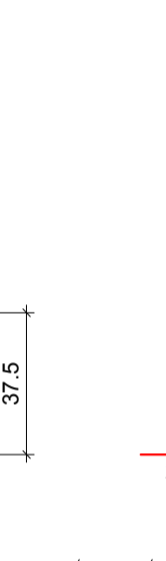
ESPERA P26
ESC 1:20



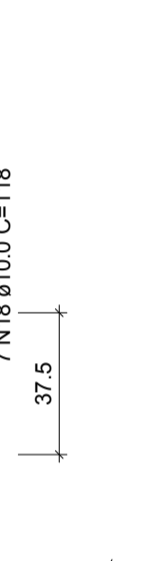
ESPERA P25
ESC 1:20



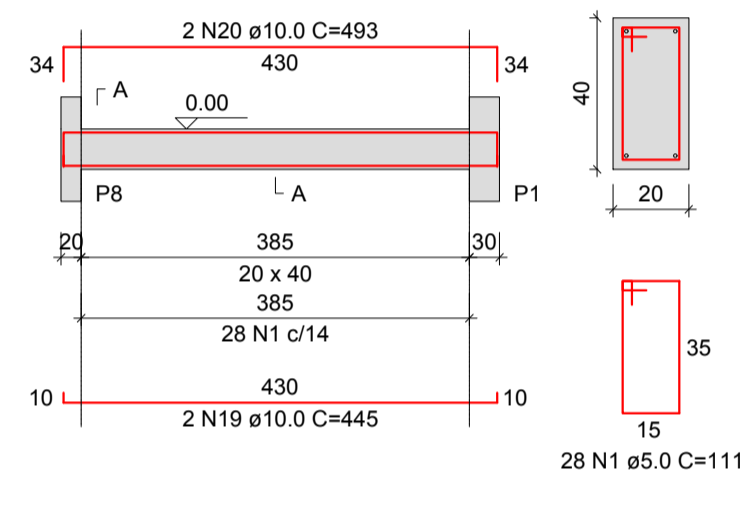
ESPERA P24
ESC 1:20



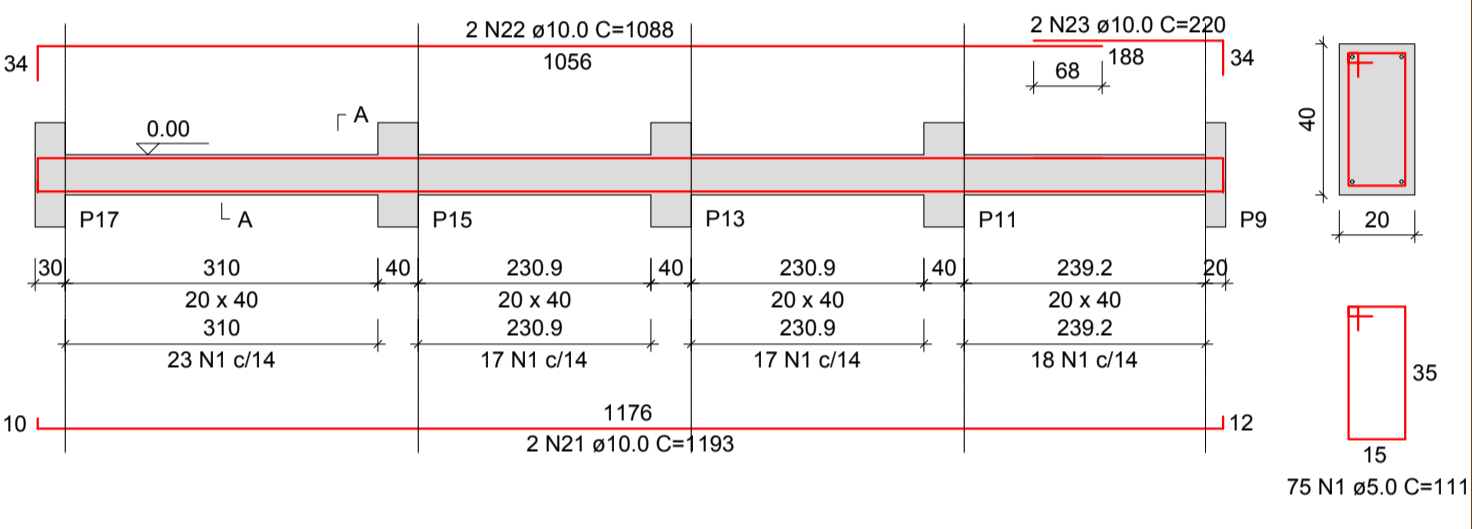
ESPERA P23
ESC 1:20



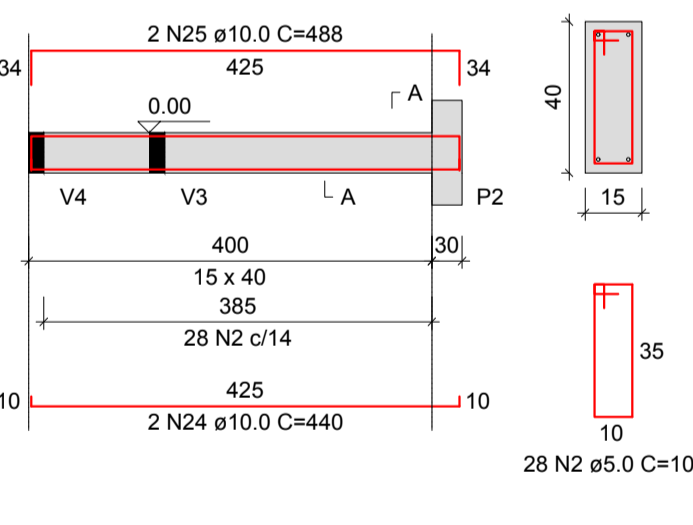
V8 (20 x 40)
ESC 1:75



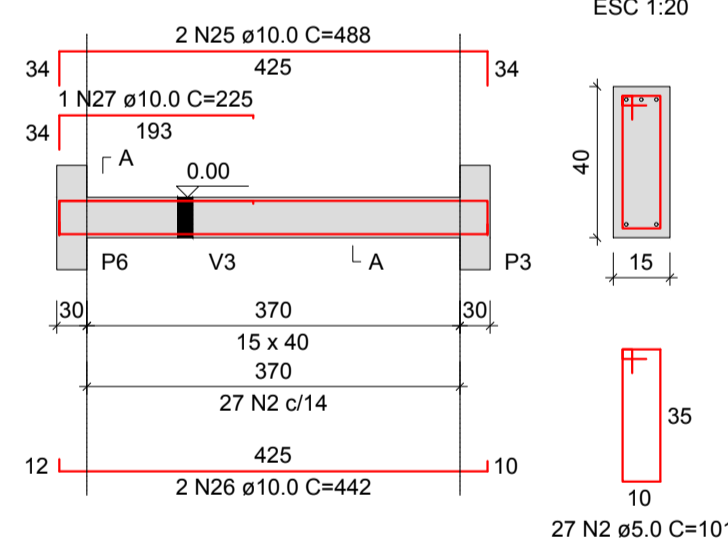
V9 (20 x 40)
ESC 1:75



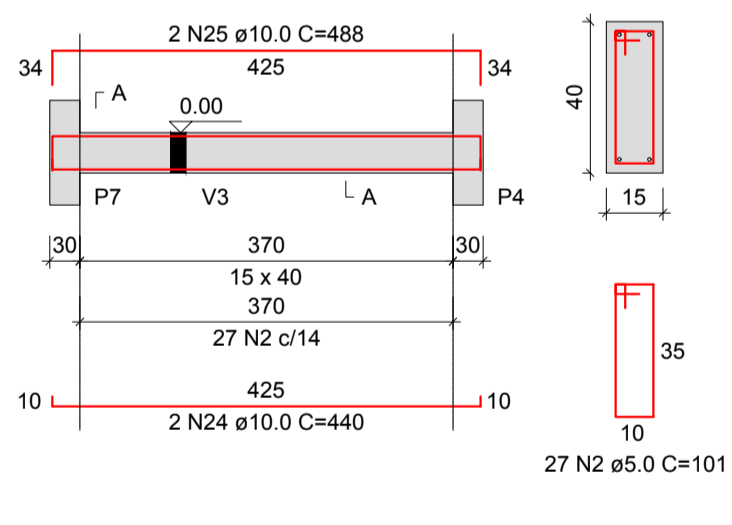
V10 (15 x 40)
ESC 1:75



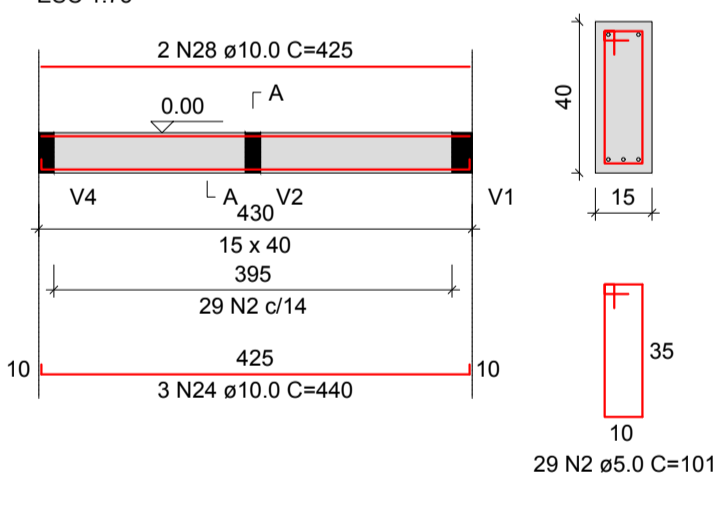
V11 (15 x 40)
ESC 1:75



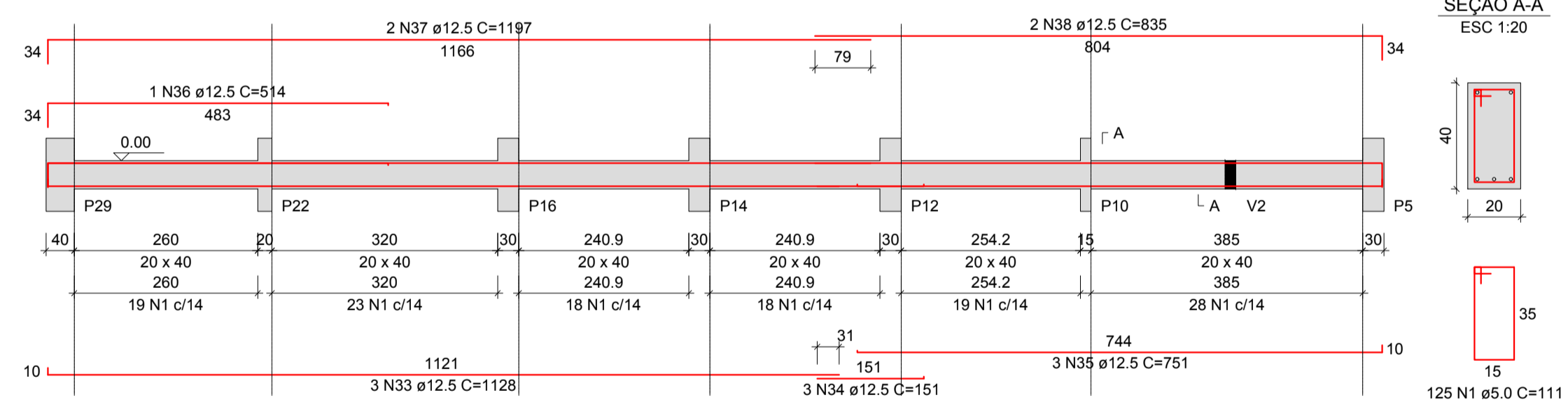
V12 (15 x 40)
ESC 1:75



V13 (15 x 40)
ESC 1:75



V14 (20 x 40)
ESC 1:75



RESUMO DO AÇO

| AÇO | DIAM (mm) | C.TOTAL (m) | QUANT + 0% (Barras) | PESO + 0% (kg) |
|------------------------|-----------|-------------|---------------------|----------------|
| CA50 | 10.0 | 377.2 | 32 | 232.5 |
| CA50 | 12.5 | 192.2 | 17 | 185.1 |
| CA60 | 5.0 | 743.8 | - | 114.6 |
| PESO TOTAL (kg) | | | | |
| CA50 | 417.7 | | | |
| CA60 | 114.6 | | | |

Volume de concreto (C-25) = 7.55 m³
Área de forma = 101.46 m²

ENGETEC
SOLUÇÕES EM ENG E ARQ

RUA BAHIA 63 - CENTRO - ERECHIM - RS

Obra / Local: EDIFICAÇÃO EM ALVENARIA - CAPELA MORTUÁRIA
Endereço: Avenida Irmãs Consolata, Quadra Quatro (04) - Paulo Bento - RS

Data: NOVEMBRO/2018
Desenho: Engetec
Escala: Indicada

Referência: **PROJETO ESTRUTURAL**
VIGAS DO TÉRREO (BALDRAME)

Prancha: **V01**

Proprietário: Prefeitura Municipal de Paulo Bento
CNPJ: 04.215.168/0001-75

Responsável Técnico: Engº Gian Marcelo Galo
CREA RS 225468
GZA Soluções em Engenharia e Arquitetura
CREA RS 230302 - CNPJ 29.015.207/0001-11